

stage depth 28' 0"

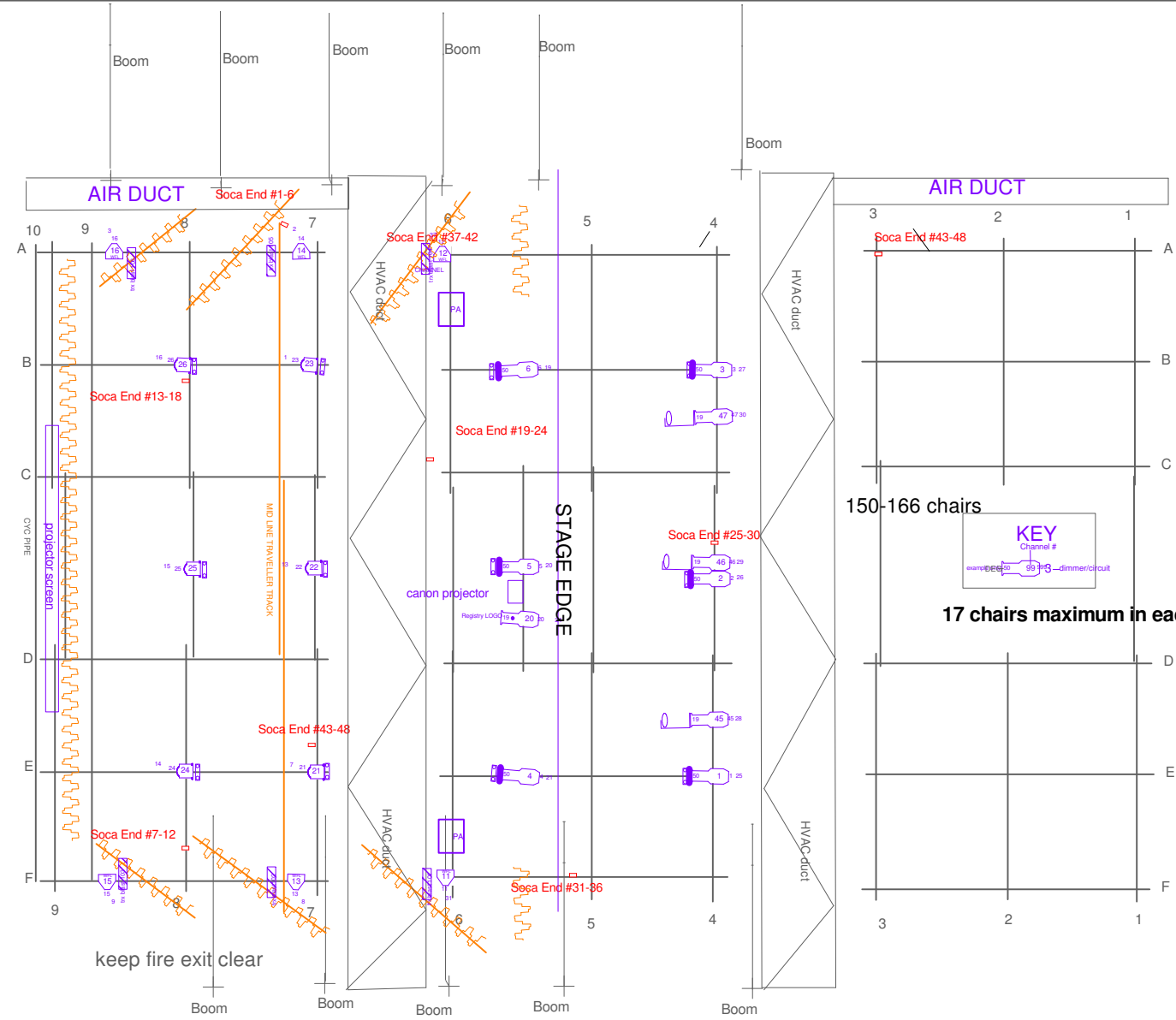
total room length 60' 0"

grid height 15 feet

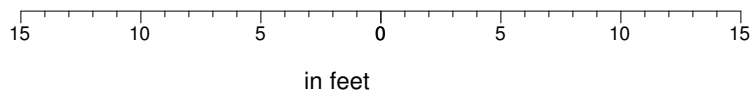
pipe under A at 11 feet

total stage width, 40' 0"

pipe under F at 11 feet



keep fire exit clear



AIR DUCT

150-166 chairs

KEY
Channel #
99-103 dimmer circuit

17 chairs maximum in each row

Standard configuration	
The Registry Theatre	
Lighting Plan	
TD Allan Hoch	Sheet: 1 of 1
	Scale: 1/8 in = 1 ft
	Date: 3/13/2018